

4D/20 Onslow Ave Elizabeth Bay

# 4th Floor

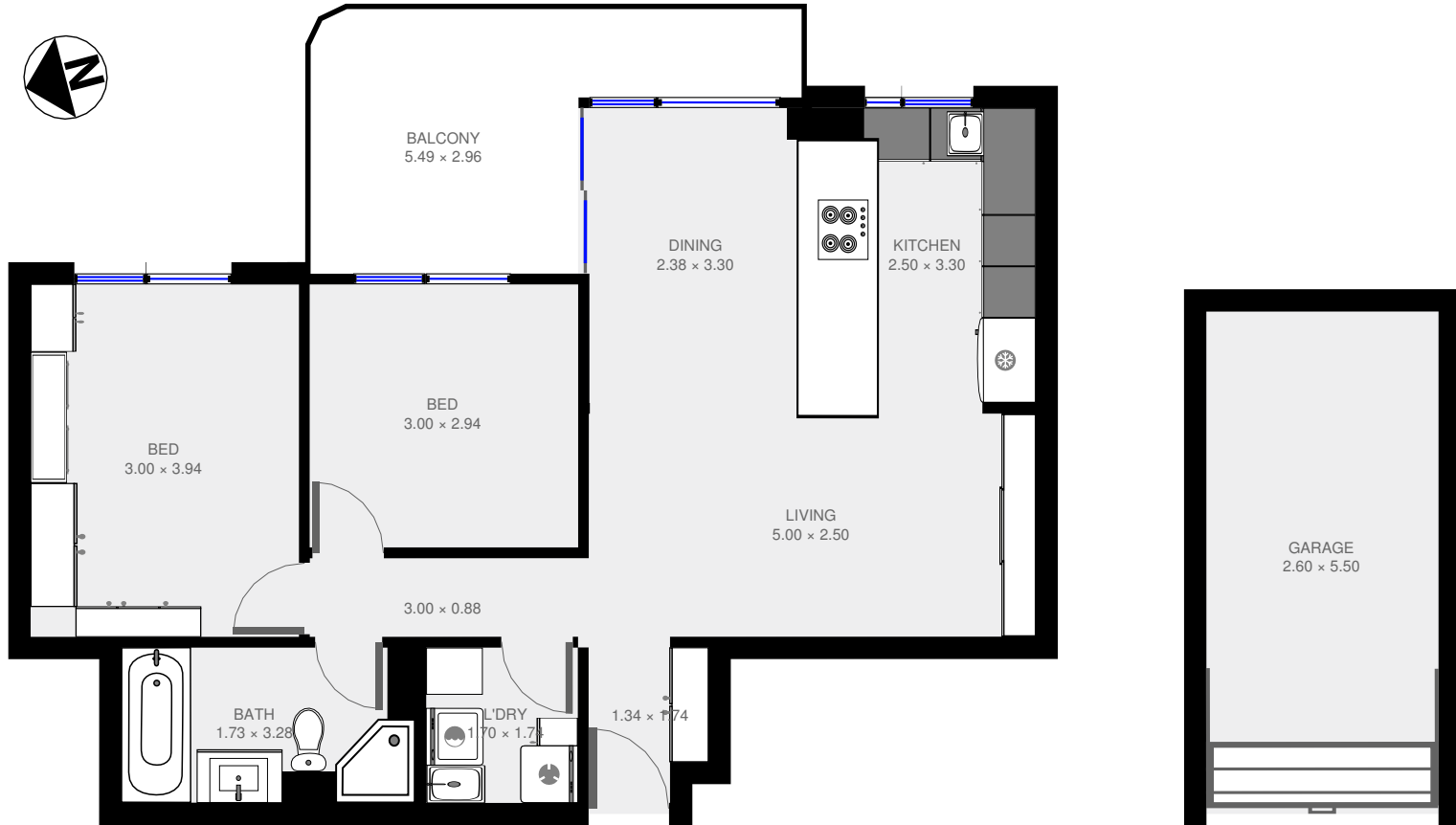


4D/20 Onslow Ave, Elizabeth Bay,



2016-07-12

62 m<sup>2</sup>



This floor plan was prepared by WWW.CRYPINGOUTLOUD.COM.AU for illustration purposes only. This document does not constitute any part of an offer or contract. Dimensions are approximate only.

